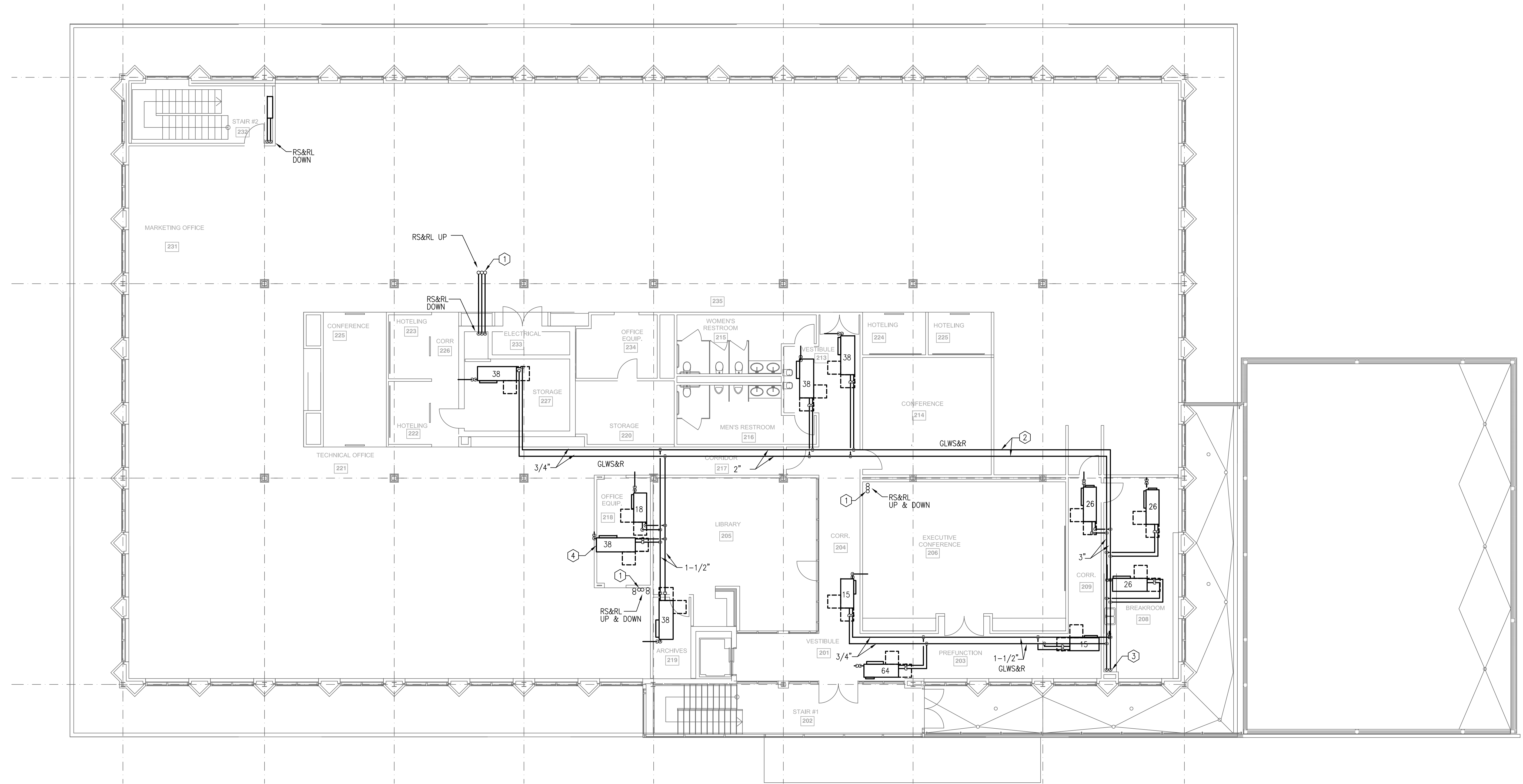


ASHRAE HEADQUARTERS
ADDITION AND RENOVATION

THIS DRAWING IS THE PROPERTY OF RICHARD + WITTSCHIEBE ARCHITECTS, INC. AND IS NOT TO BE REPRODUCED OR TRANSMITTED IN ANY FORM OR BY ANY MEANS, ELECTRONIC OR MECHANICAL, INCLUDING PHOTOCOPYING, RECORDING, OR BY ANY INFORMATION STORAGE AND RETRIEVAL SYSTEM, WITHOUT THE WRITTEN PERMISSION OF RICHARD + WITTSCHIEBE ARCHITECTS, INC. NOT VALID UNLESS SIGNED AND SEALED.



LEVEL 2 - HVAC PIPING PLAN
SCALE: 1/8" = 1'-0"

GENERAL NOTES

1. INSTALL EQUIPMENT IN ACCORDANCE WITH MANUFACTURER'S RECOMMENDATIONS SO THAT ACCESS IS PROVIDED AS REQUIRED BY INSTALLATION MANUAL.
2. SEE DRAWING SHEET M4.1 FOR HVAC SCHEDULES AND LEGEND.
3. ALL PIPING TO BE INSTALLED ABOVE CEILING. COORDINATE PIPING TO AVOID CONFLICTS WITH STRUCTURE, LIGHTING FIXTURES AND ELECTRICAL CONDUIT/CABLING.
4. PROTECT ALL MATERIALS AND EQUIPMENT FROM DAMAGE. SEAL ENDS OF OPEN PIPING DURING CONSTRUCTION TO PREVENT ENTRY OF DUST & DEBRIS.

KEY NOTES

1. REFRIGERANT PIPING UP THROUGH PENETRATION IN ROOF DECK. SEE SHEET M2.3 FOR CONTINUATION OF PIPING.
2. GROUND LOOP WATER PIPING ABOVE CEILING. EXTEND PIPING UP TO HEAT PUMP UNITS.
3. GROUND LOOP WATER PIPING UP FROM LEVEL 1. SEE SHEET M2.4 FOR CONTINUATION OF PIPING.
4. HORIZONTAL HEAT PUMP UNIT ABOVE CEILING (TYPICAL). EXTEND CONDENSATE DRAIN PIPING TO CLOSEST PLUMBING HUB DRAIN OR JANITOR CLOSET.

DRAWING TITLE:

LEVEL 2 HVAC PIPING PLAN

PROJECT NUMBER:

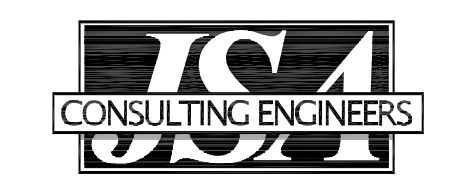
200614

DATE:

5/25/07

DRAWING NUMBER:

M2.5



Johnson, Spellman & Associates, Inc.
6991 Peachtree Industrial Boulevard, Building 700,
Norcross, Georgia 30092
Phone (770) 447-4555 Fax (770) 446-9042
visit us at www.jsai.com
© 2006 Johnson, Spellman & Associates, Inc.

PRELIMINARY ONLY
NOT FOR CONSTRUCTION