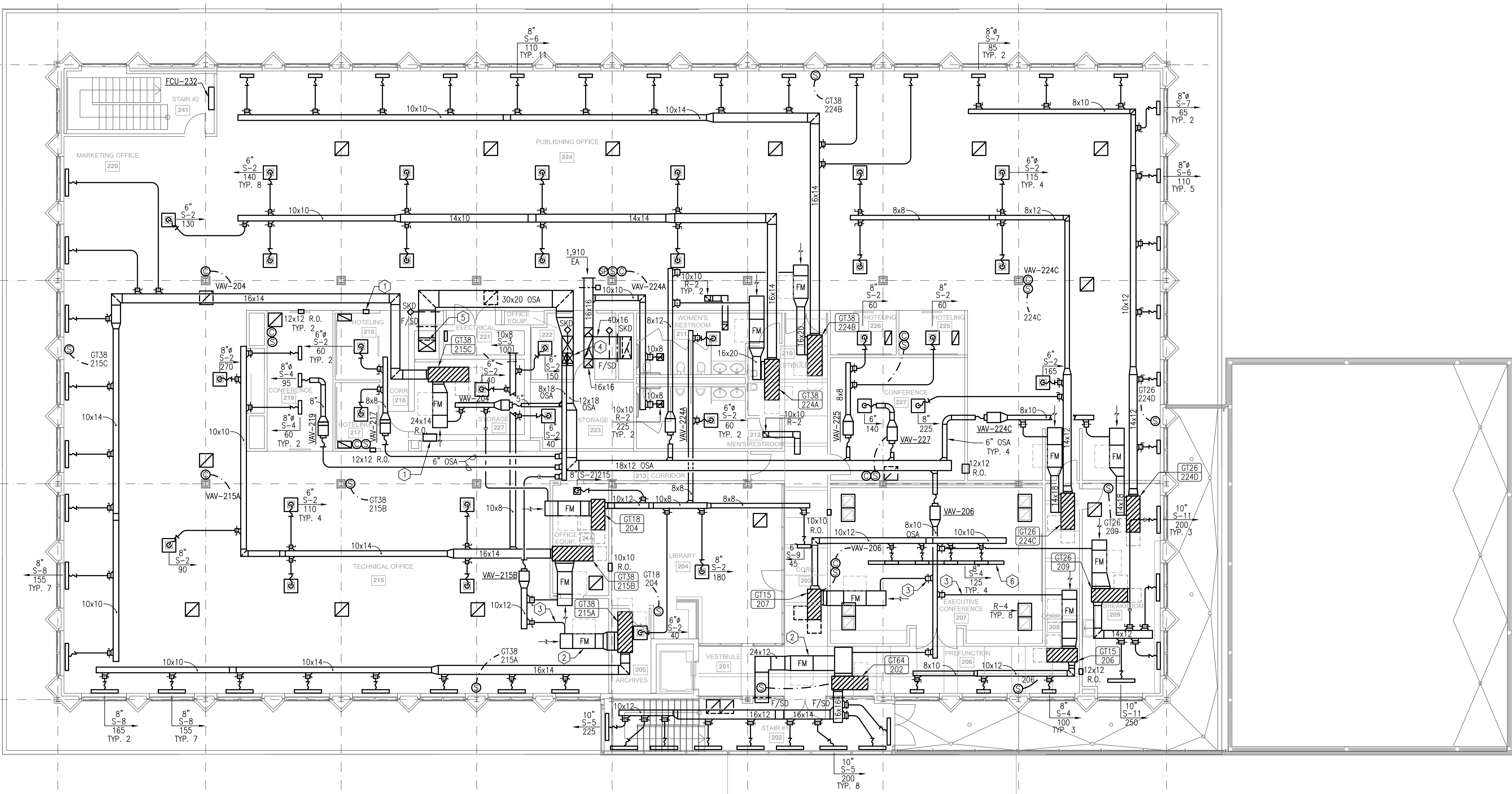


PRELIMINARY ONLY
NOT FOR CONSTRUCTION



LEVEL 2 - HVAC PLAN
SCALE: 1/8" = 1'-0"

GLHP OSA SCHEDULE

WSHP #	OSA	
	CFM	DUCT SIZE
GT38-215A	115	6"ø
GT38-215B	320	10"ø
GT38-215C	115	6"ø
GT18-204	180	8"ø
GT38-224A	300	10"ø
GT38-224B	180	8"ø
GT26-224C	225	8"ø
GT26-224D	120	6"ø
GT26-209	190	8"ø
GT15-206	50	6"ø
GT64-202	30	6"ø
GT15-207	185	8"ø
TOTAL	2010	

NOTE 1: SEE GLHP SCHEDULE ON SHEET M4.1

GENERAL NOTES

- PROVIDE FIRE DAMPER IN DUCTWORK AT FLOOR SLAB PENETRATION AND 2 HOUR RATED WALLS.
- ALL SUPPLY AIR REGISTERS TO BE TYPE S-1 AND ALL RETURN AIR GRILLES TO BE TYPE R-1, 24x24 OR 24x12, SIZE AS SHOWN, UNLESS OTHERWISE NOTED.
- WALL-MOUNTED SENSORS AND THERMOSTATS SHALL BE MOUNTED AT 48" AFF.
- MAXIMUM FLEXIBLE DUCT RUN TO DIFFUSERS SHALL NOT EXCEED 7 FEET. WHERE LENGTH EXCEEDS 7 FEET, PROVIDE INSULATED GALVANIZED STEEL RUNOUTS. FLEXIBLE DUCTWORK ONLY ALLOWED OVER ACCESSIBLE LAY IN CEILING ONLY.
- RUNOUTS TO DIFFUSERS TO BE SAME SIZE AS DIFFUSER NECK SIZE. PROVIDE SCOOP, SPIN-IN, AND SINGLE BLADE DAMPER AT ALL DIFFUSER TAKE OFFS.
- COORDINATE LOCATION OF ALL DIFFUSERS AND RETURN AIR GRILLES WITH ARCHITECTURAL REFLECTED CEILING PLAN.
- INSTALL EQUIPMENT IN ACCORDANCE WITH MANUFACTURER'S RECOMMENDATIONS SO THAT ACCESS IS PROVIDED AS REQUIRED BY INSTALLATION MANUAL.
- SEE DRAWING SHEET M4.1 FOR HVAC SCHEDULES AND LEGEND.
- ALL DUCTWORK AND PIPING TO BE INSTALLED ABOVE CEILING UNLESS OTHERWISE NOTED. COORDINATE DUCTWORK AND PIPING TO AVOID CONFLICTS WITH STRUCTURE, LIGHTING FIXTURES AND ELECTRICAL CONDUIT/CABLING.
- PROTECT ALL MATERIALS AND EQUIPMENT FROM DAMAGE. SEAL ENDS OF OPEN DUCTWORK AND PIPING DURING CONSTRUCTION TO PREVENT ENTRY OF DUST & DEBRIS.

KEY NOTES

- RETURN AIR OPENING IN WALL ABOVE CEILING. SIZE AS SHOWN TYPICAL.
- V-BANK FILTER MODULE WITH MERV 13 ELEMENTS. TYPICAL EACH HEAT PUMP.
- VENTILATION AIR FROM DOAS UNIT. EXTEND DUCT SIZE SHOWN TO HEAT PUMP RETURN IN CEILING PLENUM. SET AIRFLOW TO SCHEDULED CFM.
- 72 X16 RETURN AND 48X20 SUPPLY UP TO DOAS-1.
- 30X20 TRANSITION DOWN TO 24X24. SEE M2-1 FOR CONTINUATION.
- CONTINUOUS LINEAR DIFFUSER WITH END CAPS. SEE ARCHITECTURAL DRAWINGS FOR EXACT LENGTH. BLANK OFF UNUSED PORTIONS.