

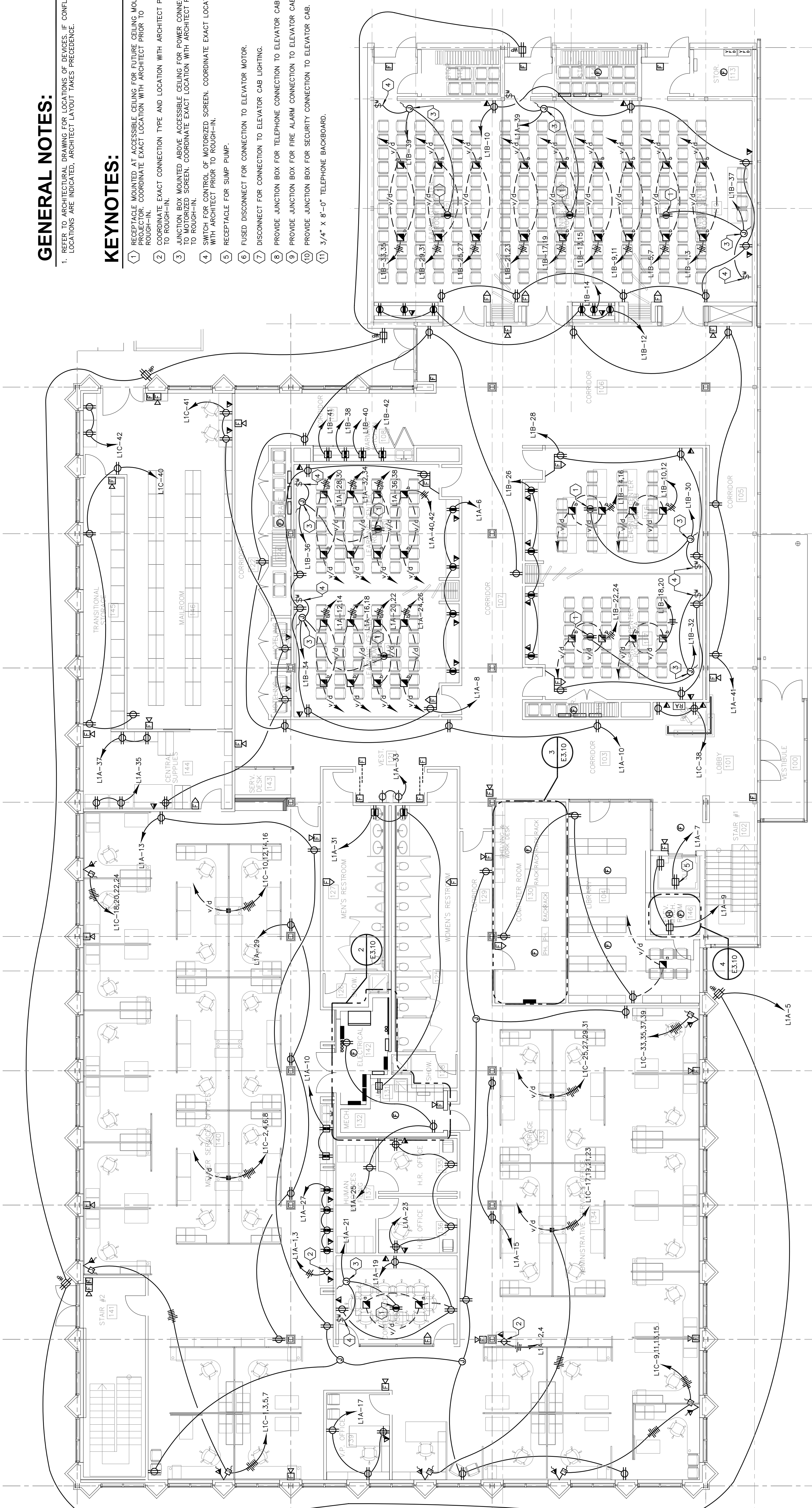


GENERAL NOTES:

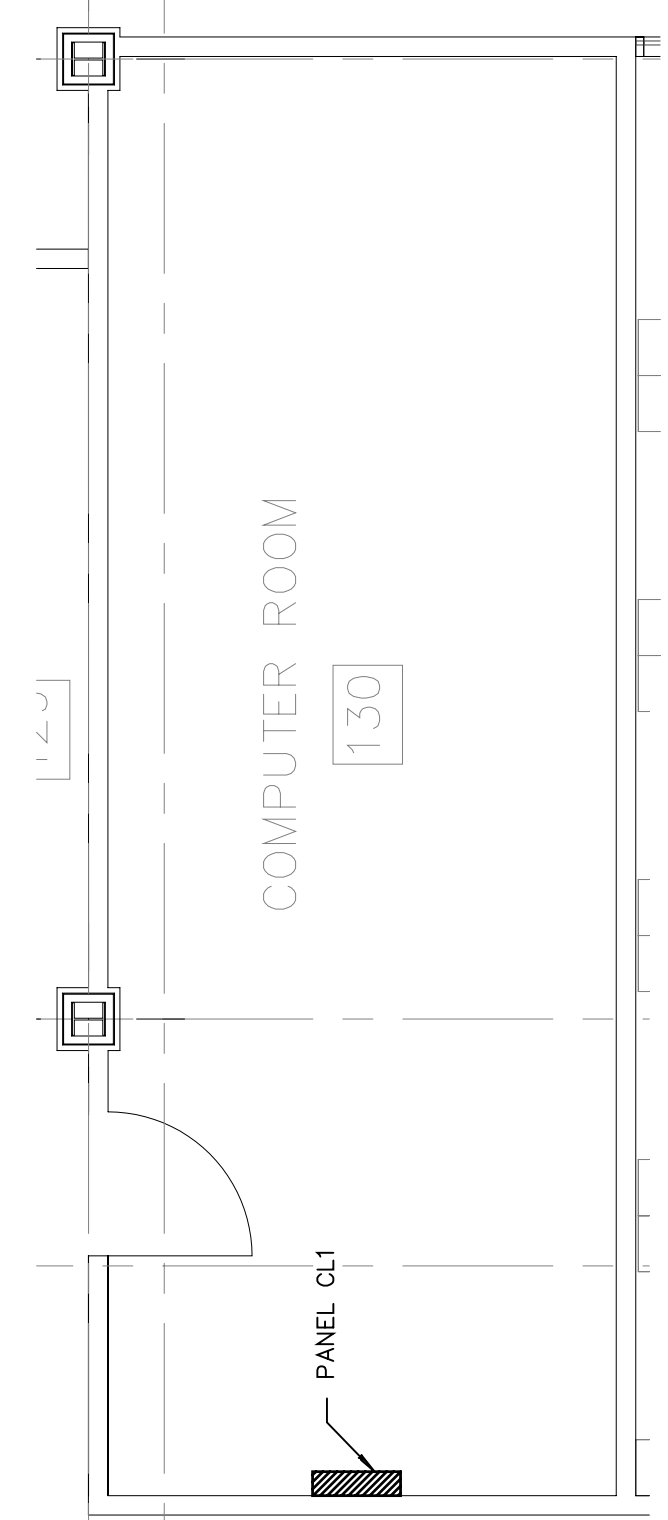
1. REFER TO ARCHITECTURAL DRAWINGS FOR LOCATIONS OF DEVICES. IF CONFLICTING LOCATIONS ARE INDICATED, ARCHITECT LAYOUT TAKES PRECEDENCE.

KEYNOTES:

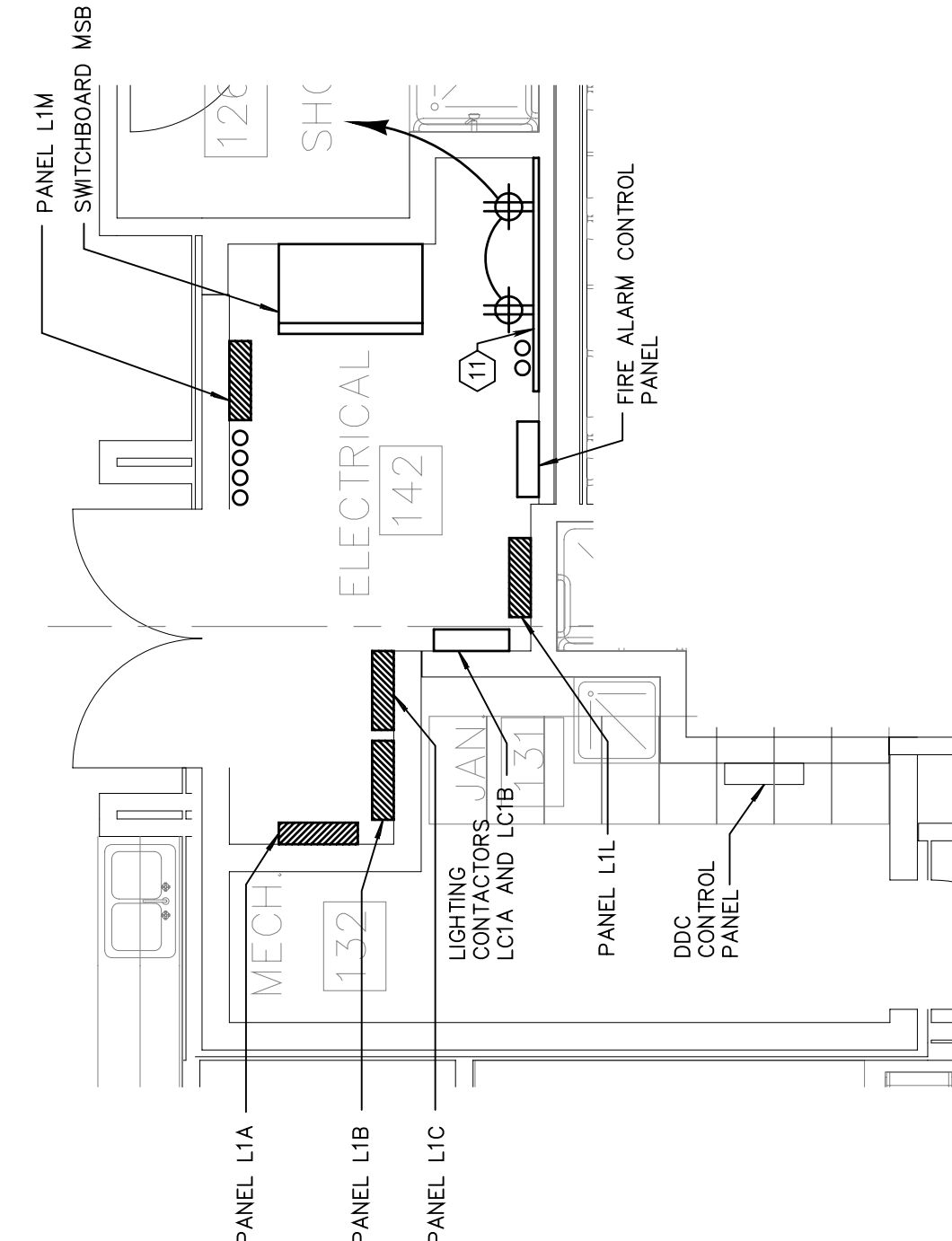
- 1 RECEPTACLE MOUNTED AT ACCESSIBLE CEILING FOR FUTURE CEILING MOUNTED PROJECTOR. COORDINATE EXACT LOCATION WITH ARCHITECT PRIOR TO ROUGH-IN.
- 2 COORDINATE EXACT CONNECTION TYPE AND LOCATION WITH ARCHITECT PRIOR TO ROUGH-IN.
- 3 JUNCTION BOX MOUNTED ABOVE ACCESSIBLE CEILING FOR POWER CONNECTION TO MOTORIZED SCREEN. COORDINATE EXACT LOCATION WITH ARCHITECT PRIOR TO ROUGH-IN.
- 4 SWITCH CONTROLS OF MOTORIZED SCREEN. COORDINATE EXACT LOCATION WITH ARCHITECT PRIOR TO ROUGH-IN.
- 5 RECEPTACLE FOR SUMP PUMP.
- 6 FUSED DISCONNECT FOR CONNECTION TO ELEVATOR MOTOR.
- 7 DISCONNECT FOR CONNECTION TO ELEVATOR CAB LIGHTING.
- 8 PROVIDE JUNCTION BOX FOR TELEPHONE CONNECTION TO ELEVATOR CAB.
- 9 PROVIDE JUNCTION BOX FOR FIRE ALARM CONNECTION TO ELEVATOR CAB.
- 10 PROVIDE JUNCTION BOX FOR SECURITY CONNECTION TO ELEVATOR CAB.
- 11 3/4" X 8'-0" TELEPHONE BACKBOARD.



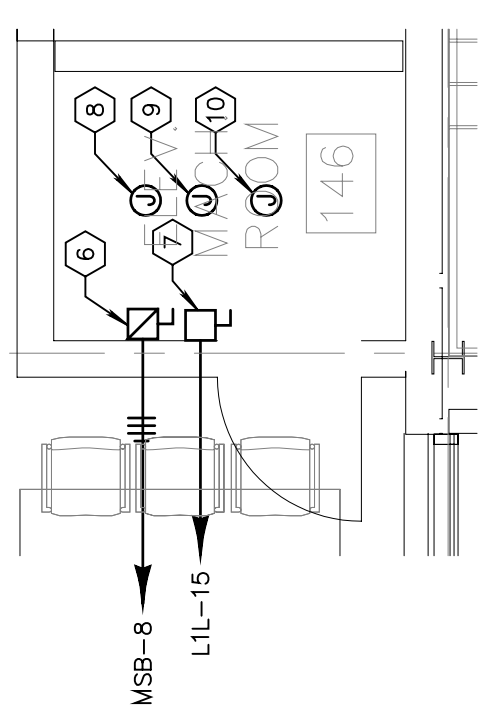
1 FIRST FLOOR POWER PLAN
SCALE: 1/8" = 1'-0"



3 ENLARGED COMPUTER ROOM
SCALE: 1/4" = 1'-0"



2 ENLARGED ELECTRICAL ROOM
SCALE: 1/4" = 1'-0"



4 ENLARGED ELEVATOR MACHINE ROOM
SCALE: 1/4" = 1'-0"