

SITE PLAN- CONFIGURATION/ IMPERVIOUSNESS

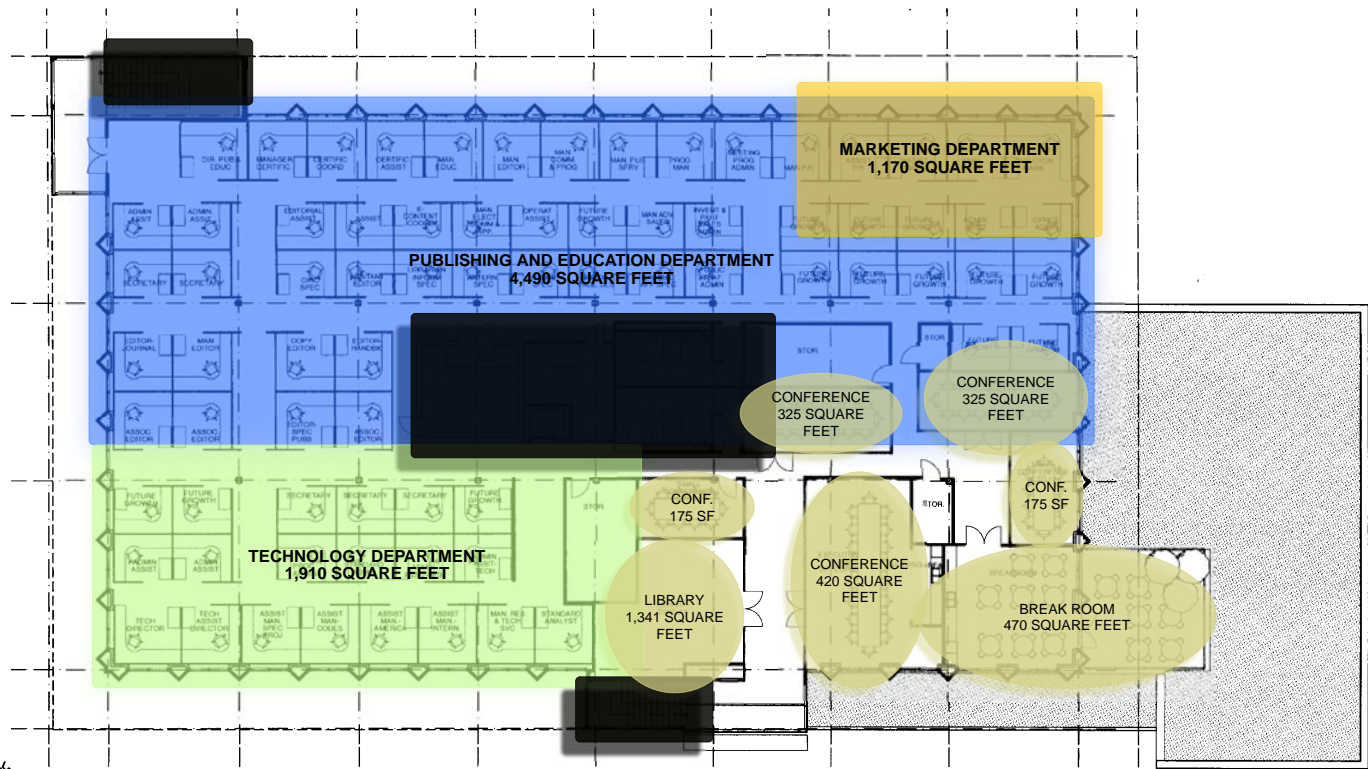
LEED CONCERNS:

EXISTING SITE AREA -	109,043 SF
EXISTING IMPERVIOUS AREA-	97,031 SF
CURRENT PERCENT IMPERVIOUS-	88%
REQUIRED PERCENT IMPERVIOUS	63%
PAVING REDUCTION REQUIRED	28,334 SF
EXISTING PARKING SPACES-	143 SPACES
REQUIRED PARKING SPACES-	140 SPACES
HEAT ISLAND SHADED AREA-REQUIRED-	15,539 SF
HEAT ISLAND PERMEABLE PAVING REQUIRED	25,898 SF

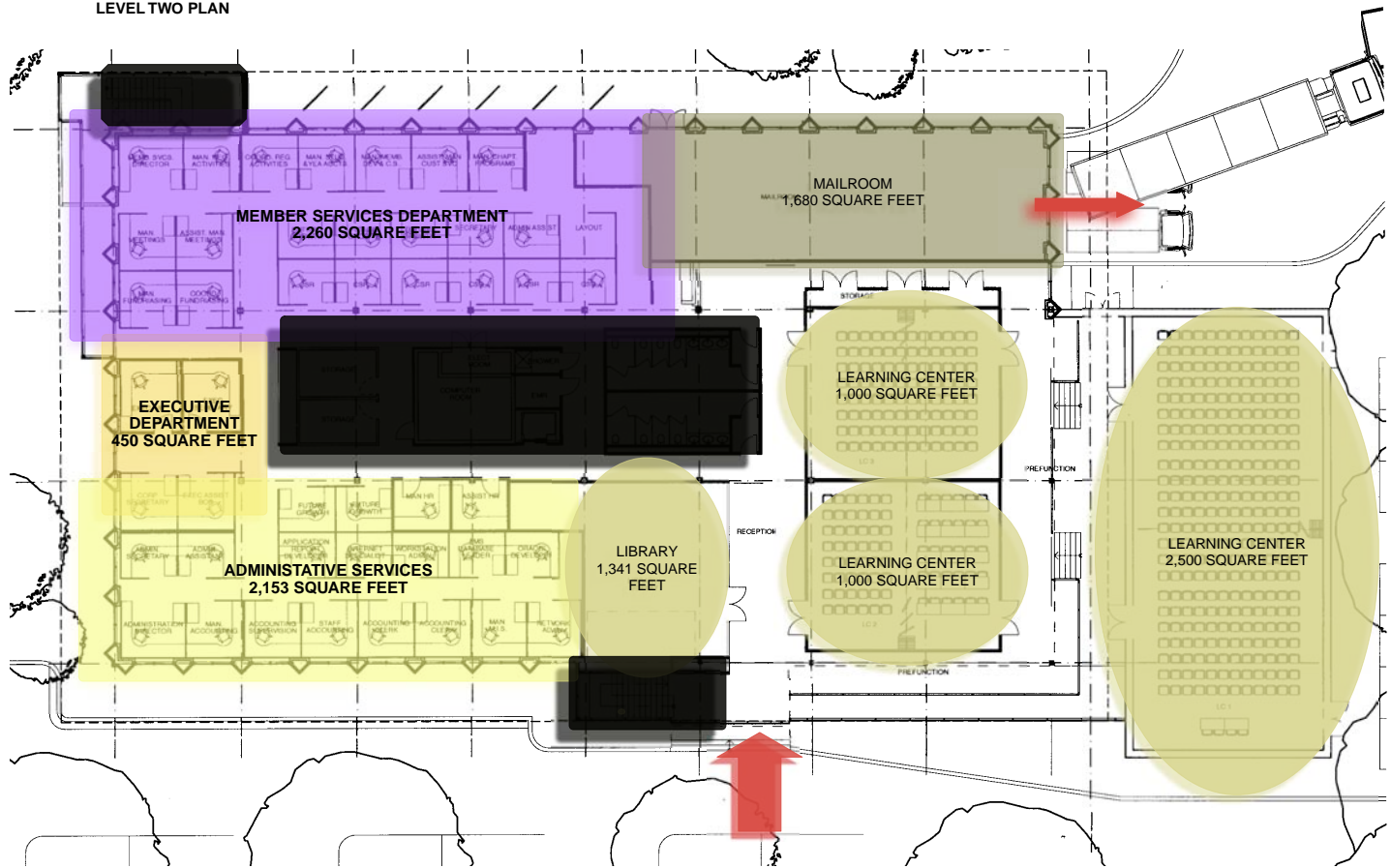
**ASHRAE HEADQUARTERS
RENOVATION**

AUGUST 18, 2006





LEVEL TWO PLAN

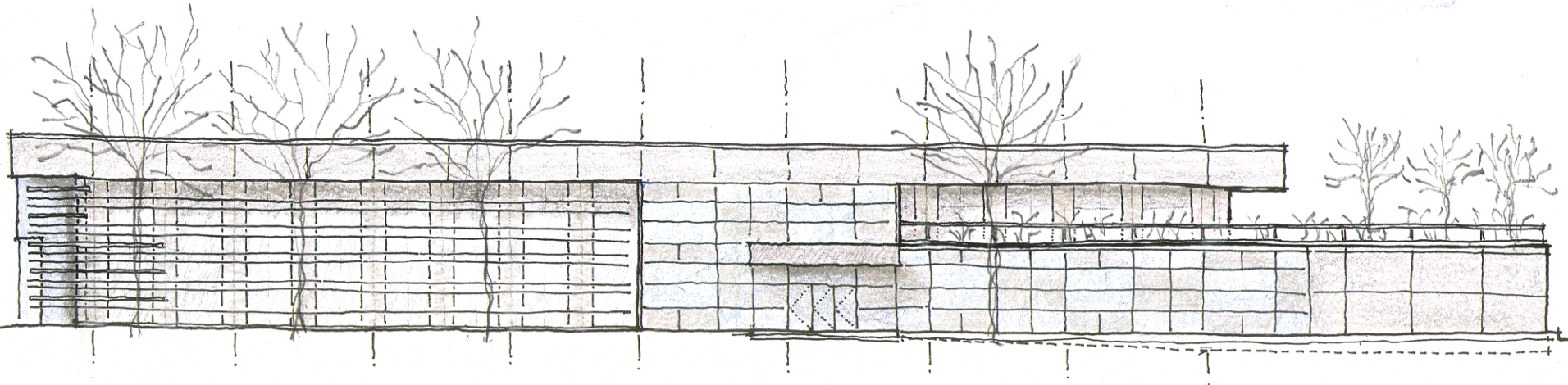


LEVEL ONE PLAN

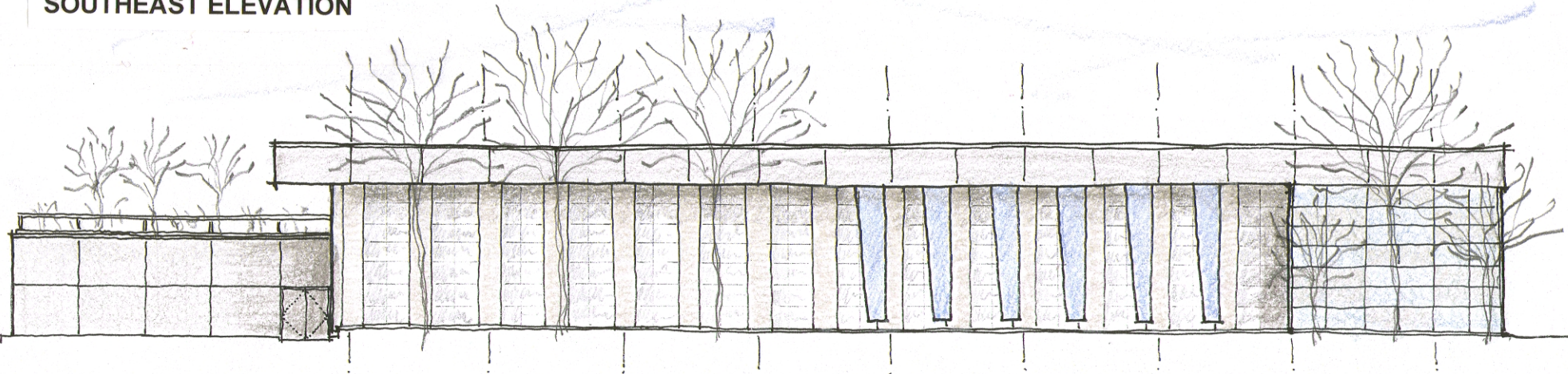
**ASHRAE HEADQUARTERS
RENOVATION**

AUGUST 18, 2006





SOUTHEAST ELEVATION



NORTHWEST ELEVATION



ASHRAE PROGRAM VERIFICATION				08.18.06	
				VIEWS POSSIBLE	VIEWS REQUIRED
EXECUTIVE DEPARTMENT					
	# of persons	sf/person or room	department sf		
Exec. Vice President	1	150	150	150	150
Corporate Secretary	1	100	100	100	100
Exec. Assist. BOD	1	100	100	100	100
Executive Secretary	1	100	100	100	100
Total for Executive Facilities	4 people		450 sf		
TECHNOLOGY DEPARTMENT					
	# of persons	sf/person or room	department sf		
Director	1	120	120	120	120
Admin. Assistant	1	80	80	80	80
Assist. Man -Spec. Proj.	1	100	100	100	100
Assist. Dir. -Technology	1	100	100	100	100
Admin. Assistant	1	80	80	80	80
Procedures Admin.	1	80	80	80	80
Standards Admin.	1	80	80	80	80

Manager- Fundraising *	1	100	100	100	100
Fundraising Coordinator	1	100	100	100	100
Admin Assist.	1	80	80	80	80
Future Growth *	3	80	240	240	240
Office Equipment	1	90	90		
Brochure Layout/ Assembly	1	90	90	90	90

Total sf for Member Services Facilities 23 people 2,260 sf

ADMINISTRATIVE SERVICES DEPARTMENT

	# of persons	sf/person or room	department sf		
Director	1	120	120	120	120
Secretary	1	80	80	80	80
Man. Human Resources	1	100	100		100
Asistant- Human Res.	1	100	100		100
Receptionist	1	100	100	100	100
Man. Accounting	1	100	100	100	100
Staff Accountant	1	100	100	100	100
Accounting Supervision	1	100	100	100	100
Accounting clerck	2	100	200	200	200
Mailroom Supervisor	1	1	1	1	1
Mailroom Clerks	2	1	2	2	2
Man- MIS	1	100	100	100	100
Network Administrator	1	100	100	100	100
Internet/ network spe.	1	100	100	100	100
Workstation Admin.	1	80	80	80	80
AMS Database Leader	1	80	80	80	80
Oracle Developer	1	80	80	80	80
applic/report dev.	1	80	80	80	80
admin. assist.	1	80	80	80	80
future growth	2	80	160	160	160

mailroom	1	1,680	1,680		
office equipment	1	90	90		
computer room	1	200	200		

Total sf for Administrative Facilities 23 people 3,833 sf

PUBLISHING AND EDUCATION DEPARTMENT

	# of persons	sf/person or room	department sf		
Director	1	120	120	120	120
Admin. Assist.	1	80	80	80	80
Manager- Certification	1	100	100	100	100
Asistant-	1	80	80	80	80
Certification Coord.	1	100	100	100	100
Certification Assist.	1	100	100	100	100
Manager- Education	1	100	100	100	100
Managing Editor	1	100	100	100	100
Secretary	1	80	80	80	80
Man. Comm. & Prog.	1	100	100	100	100
Secretary	1	80	80	80	80
Meeting Program Admin.	1	100	100	100	100
Man. Publishing Serv.	1	100	100	100	100
Graphic Application Spec.	1	100	100	100	100
Public. Traffic Admin.	1	100	100	100	100
Invent. & Part. Sales Adm.	1	100	100	100	100
Circulation Specialist	1	100	100	100	100
Man. Advertising Sales	1	100	100	100	100
Operations Assistant	1	100	100	100	100
Production Manager	1	100	100	100	100
Man. Elect. Comm. & App.	1	100	100	100	100
Librarian/ Inform Spec.	1	100	100	100	100
E-content Coordinator	1	100	100	100	100

Internet Specialist	2	100	200	200	200
Editor- Journal	1	100	100	100	100
Managing Editor	1	100	100	100	100
Associate Editor	2	100	200	200	200
Copy Editor	1	100	100	100	100
Editor- Handbook	1	100	100	100	100
Associate Editor	1	100	100	100	100
Typographer/ Page Des.	1	100	100	100	100
Editor- Special Pubs.	1	100	100	100	100
Assistant Editor	1	100	100	100	100
Editorial Assistant	1	80	80	80	80
Admin. Assist.	1	80	80	80	80
Future Growth	10	80	800	800	800
Library	1	1,341	1,341		1,341
Office Equipment	1	90	90		

Total sf for Publishing and Ed. Facilities: 47 people 5,831 sf

MARKETING

	# of persons	sf/person or room	department sf		
Director	1	120	120	120	120
Admin. Assist.	1	80	80	80	80
Man. Marketing	1	100	100	100	100
Asistant- Marketing	2	80	160	160	160
Man. Public Relations	1	100	100	100	100
Assistant. P.R.	1	80	80	80	80
Office Admin.	1	80	80	80	80
Future Growth	1	80	80	80	80
Office Equipment	1	110	110		

Total sf for Marketing Facilities	9 people	910 sf		
GENERAL SPACES				
	<i># of spaces</i>	<i>sf/ room</i>	<i>room sf</i>	
Executive Conference	1	450	450	450
Serving Area	1	80	80	
Small Conference	2	325	650	650
Learning Center-large	1	2,500	2,500	2,500
Learning Center-small	2	1,000	2,000	2,000
Storage	1	2,650	2,650	
Breakroom	1	500	500	500
Total sf for General Facilities	9 people	8,830 sf		
<hr/>				
Total employees served	127 people		17,108	20,974
Sqaure footage - Program Net	24,374 square feet			81.57%

Circulation (net x 0.4)]

9,750 square feet

Total Square feet required

34,124 Square Feet

Total Square Feet Available

30,100 Square Feet

